



GOMERSAL PARK

HOTEL • SPA

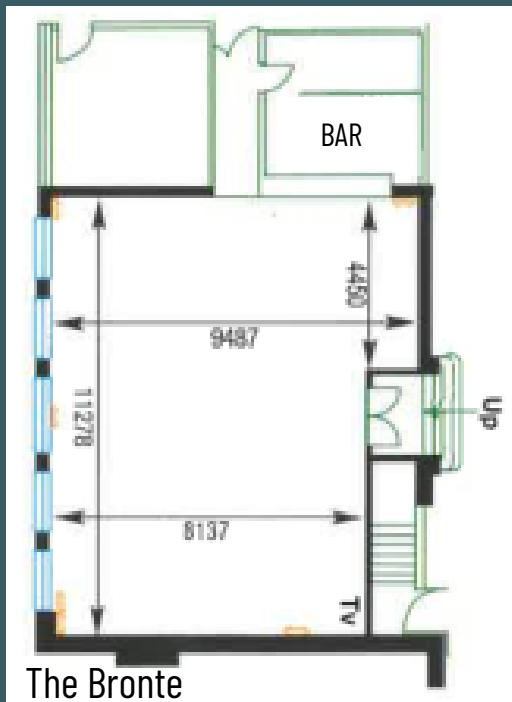


**CORPORATE
EVENT
ROOMS**

THE BRONTE

Situated on the first floor, the Bronte is an excellent meeting space featuring a bright breakout room, along with access to the Garden Terrace.

- ✓ **NATURAL LIGHT**
- ✓ **AIR CONDITIONING**
- ✓ **BREAKOUT ROOM**



LAYOUT

BOARDROOM:	40
BANQUET STYLE:	80
CLASSROOM:	70
THEATRE STYLE:	100
CABARET:	60
SYNDICATE ROOM:	120

MEASUREMENTS

WIDTH:	9.5M
LENGTH:	11.0M
HEIGHT:	3.4M
AREA:	104.5M ²



OAKWELL SUITE

The Oakwell is comprised of the both the Lister Suite & Priestley Suite with a connected breakout lounge. Each suite can accommodate various different layouts and is complemented by a connected breakout lounge.

- ✓ NATURAL LIGHT
- ✓ AIR CONDITIONING
- ✓ BREAKOUT LOUNGE



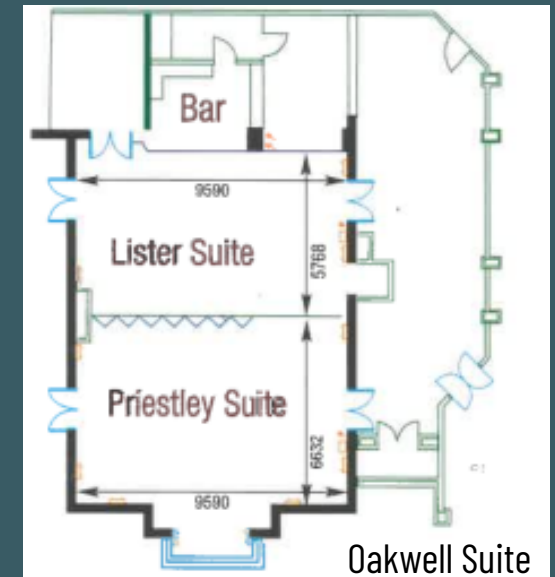
MEASUREMENTS

WIDTH:	8.8M
LENGTH:	12.1M
HEIGHT:	2.6M
AREA:	106.5M ²



LAYOUT

BOARDROOM	40
BANQUET STYLE	100
THEATRE	120
U-SHAPE	40
CLASSROOM	60
SYNDICATE ROOM/S	150
CABARET	100



LISTER SUITE

- ✓ AIR CONDITIONING
- ✓ NATURAL DAYLIGHT
- ✓ BREAKOUT LOUNGE CONNECTED

MEASUREMENTS

WIDTH: 8.8M
LENGTH: 5.7M
HEIGHT: 2.6M
AREA: 50.2M²

LAYOUT

BOARDROOM	30
THEATRE	50
BANQUET	40
CLASSROOM	40
CABARET	40
U-SHAPE	30
SYNDICATE ROOM	50

PRIESTLEY SUITE

- ✓ AIR CONDITIONING
- ✓ NATURAL DAYLIGHT
- ✓ BREAKOUT LOUNGE CONNECTED

MEASUREMENTS

WIDTH: 8.8M
LENGTH: 5.7M
HEIGHT: 2.6M
AREA: 50.2M²

LAYOUT

BOARDROOM	30
THEATRE	50
BANQUET	40
CLASSROOM	40
CABARET	40
U-SHAPE	30
SYNDICATE ROOM	50



THE PATRICK SUITE

This versatile meeting room offers a comfortable setting with air conditioning and plenty of natural daylight. The Patrick also offers a syndicate room, perfect for smaller group discussions or a more informal setting.

LAYOUT

BANQUET	18
BOARDROOM	20
CLASSROOM	15
SYNDICATE ROOM/S	40
THEATRE STYLE	40
U-SHAPE	15

MEASUREMENTS

WIDTH:	3.8M
LENGTH:	7.4M
HEIGHT:	2.0M
AREA:	28.1M ²

- ✓ AIR CONDITIONING
- ✓ NATURAL DAYLIGHT
- ✓ SYNDICATE ROOM



PATRICK SYNDICATE

The Patrick Syndicate room, located on the first floor next to the Patrick Suite can accommodate a maximum of 10 people.

WIDTH: 3.9M

LENGTH: 4.1M

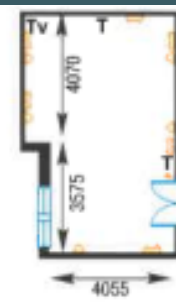
AREA: 15.8M

LAYOUT

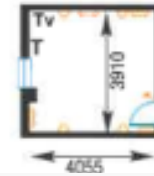
BOARDROOM 10

SYNDICATE ROOM 10

INTERVIEW STYLE 8



Patrick Suite



Patrick Syndicate

LAYOUT

BOARDROOM 20

SYNDICATE ROOM/S 16

THEATRE 20

U-SHAPE 15

MEASUREMENTS

WIDTH: 7.3M

LENGTH: 4.1M

AREA: 29.6M²

CHARLOTTE SUITE

Situated on the first floor adjacent to the Patrick suite and Patrick syndicate, our Charlotte suite is a popular choice for smaller meetings of up to 20 people.

✓ AIR CONDITIONING

✓ NATURAL DAYLIGHT

✓ SYNDICATE ROOM

CONFERENCE ROOM LAYOUT



Oakwell Suite

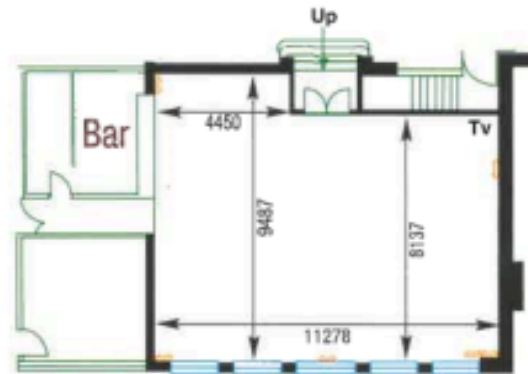
WIDTH: 8.8M
 LENGTH: 12.1M
 HEIGHT: 2.6M
 AREA: 106.5M

Lister suite

WIDTH: 8.8M
 LENGTH: 5.7M
 HEIGHT: 2.6M
 AREA: 50.2M

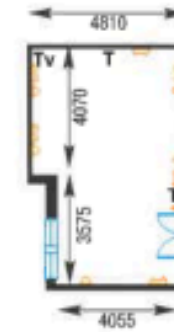
Priestley Suite

WIDTH: 8.8M
 LENGTH: 5.7M
 HEIGHT: 2.6M
 AREA: 50.2M



Bronte Suite

WIDTH: 9.5M
 LENGTH: 11.0M
 HEIGHT: 3.4M
 AREA: 104.5M



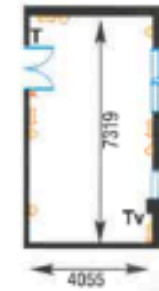
Patrick Suite

WIDTH: 3.8M LENGTH: 7.4M
 HEIGHT: 2.0M AREA: 28.1M



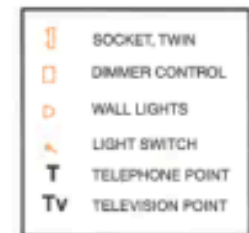
Patrick Syndicate

WIDTH: 3.9M
 LENGTH: 4.1M
 AREA: 15.8M



Charlotte Suite

WIDTH: 7.3M
 LENGTH: 4.1M
 AREA: 29.6M



PACKAGES

DAY DELEGATE

INCLUDES:

ROOM HIRE, LCD PROJECTOR, SCREEN AND FLIPCHART,
FREE WIFI, WATER AND SWEETS, TEA, COFFEE AND
BISCUITS BREAK X 3, HOT AND COLD CHEF'S CHOICE
BUFFET LUNCH

FROM £45 PER PERSON

24 HOUR

INCLUDES:

ROOM HIRE, LCD PROJECTOR, SCREEN AND FLIPCHART,
FREE WIFI, WATER AND SWEETS, TEA, COFFEE AND
BISCUITS BREAK X 3, HOT AND COLD CHEF'S CHOICE
BUFFET LUNCH, DINNER, BED, BREAKFAST

FROM £179 PER PERSON

**MULTI NIGHT CONFERENCE PACKAGE
DETAIL AVAILABLE ON REQUEST**



GOMERSAL PARK

HOTEL • SPA

TO ENQUIRE CALL: 01274 869386

OR EMAIL EVENTS@GOMERSALPARK.CO.UK

GOMERSAL PARK HOTEL

MOOR LANE

GOMERSAL

WEST YORKSHIRE

BD19 4LJ

